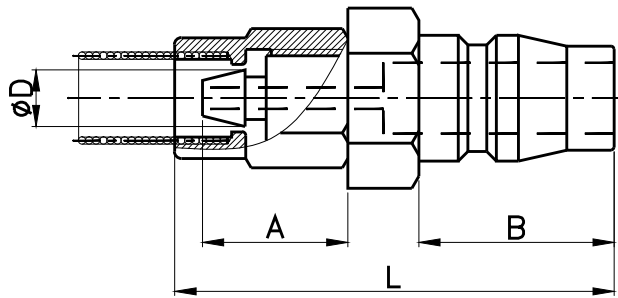
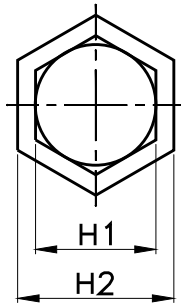


PN



MODEL	øD	L	A	B	H1 (Hex)	H2 (Hex)	WEIGHT (g)	BOX(EA)
PN 08	6.7	43.0	14.0	20.5	14	15	34.0	50
PN 10	8.4	47.0	16.0		14	16	51.0	40
PN 12	10.2	52.0	19.0		19	19	59.0	30